

2025 Camp Guide

Kiwanis • Tapawingo • Widjiwagan



Girl Scouts of Central Illinois
Summer Camp

• 2025 •



Give the Gift of Camp!



Wrap Up the Perfect Gift this holiday season!

This year give your special Girl Scout the gift of Summer Camp! Our camps will provide time outdoors, opportunities to learn new skills and have an experience they will cherish their entire lives.

Visit any of GSCI's Trefoil Boutiques or call 217-693-4720 to purchase your Camp Gift Card for your Girl Scout!

Disclaimer: Gift Cards vouchers will be printed or emailed to recipient. Not valid for camp deposit. To redeem contact our customer care team at 888-623-1237 and payment will be processed and applied to balance of camp.

Work at our Camps!



Are you a responsible, enthusiastic, creative team-player who's comfortable in a rustic outdoor setting and enjoys seeking out challenging adventures? Join our Girl Scout Summer Camp Team! There will be some long, hot days, but what other job lets you play games, tie-dye, and make s'mores all while forever changing the life of a child?

We provide training, certifications, leadership opportunities, and fun! You'll gain leadership experience, lifelong friends, problem-solving skills, confidence, and be part of a great team of leaders guiding young women to success. Think you're up to the challenge of changing lives?



Learn more and apply today at
bit.ly/GSCIJoinOurCampStaff
No previous Girl Scout experience required!



Table of Contents

Registration Info	4
General Camp Info	5-9
Our Camps	10
Meet Your Camp Staff	11-12
Camp Readiness Quiz	13
A Taste of Camp	14
Day Camps	15
Kiwanis Day Camps	16-18
Quincy Day Camp	19
Tapawingo Day Camp	20
Widjiwagan Day Camps	21-23
Overnight Camps	24
Tapawingo Mini Overnight Camps	25-26
Tapawingo Overnight Camps	27-30
Teen Leadership Overnight Camps	31-32
Equestrian Camps	33
Equestrian Mini Overnight Camps	34
Equestrian Overnight Camps	35-37
Travel Camps	38
Family and Troop Events	39
Summer Programs	40
Camp Directory	41-43



**Summer Camp registration opens
Wednesday, February 5 at 8am!**

Register at GetYourGirlPower.org

Registration

Registration

Summer camp registration opens Wednesday, February 5 at 8am at GetYourGirlPower.org. Many camps fill and close on opening day of registration, so don't wait!

Once registered, you will receive a confirmation e-mail receipt. The e-mail will contain a link to the confirmation packet, which includes all paperwork that needs to be turned in during camp check-in on the first day. You can also find the confirmation packet and required forms on our website under Summer Camps.

Registration closes two weeks prior to the start of session. If a session is full, you can request to be placed on our contact list. If or when a spot may open up, those on the contact list will be contacted. The open slot will be put online, and it is first come first serve! Contact Customer Care to be placed on a contact list for camp.

Deposit

A \$25 per session **non-refundable** and **non-transferable** deposit is required for registration. Full payment is required upon registration if session is \$100 or less. Cookie Dough/Nutty Bucks or Gift Certificates may not be used for deposit.

Payment

All camp fees must be paid in full two weeks prior to the camp session. Payment is not accepted at camp. Campers carrying an outstanding balance 2 weeks prior to session will lose their spot and deposit.

Cookie Dough and/or Nutty Bucks must be sent in prior to, or with, the final payment. Cookie Dough/Nutty Bucks cannot be submitted for a cash refund or used as the initial deposit.

Refund Policy

If a session or event does not meet the minimum registration as of the deadline date, GSCI reserves the right to cancel. Notice will be made by email.

Deposits, extra fees, camper adventure care packages, and prepaid trading post account funds are non-refundable. A full refund, including deposit, is made only if a camper cannot be placed in a program or if it is necessary to cancel the program. No refunds will be made for campers arriving late, leaving early, attending only part of the program, for those who fail to attend, or for campers who violate camp policies and rules and are sent home.

Contact Customer Care at customercare@girlscouts-gsci.org or 1-888-623-1237 to obtain a Refund Request Form. After camp ends, partial refunds may be considered on a case-by-case basis and only in the case of extenuating family circumstances or medical reasons supported by a doctor's statement.

Girl Scouts of Central Illinois aspires to be an organization that is anti-racist, inclusive of members' identities, and equitable, building accessibility to Girl Scouting for all.

Summer Camp Flexible Pricing

Girl Scouts of Central Illinois (GSCI) strives to ensure household finances are not a barrier when paying for a camp experience. Camp opportunities are subsidized by GSCI, meaning the cost to provide camp programming and operate camp is greater than the fee paid to participate. The flexible pricing system makes it possible for all campers to have the same experience regardless of what their caregiver can afford. Flexible prices are listed with each camp session description and should be selected based on the family's budget. Each session has three tiers of pricing.

Tier One (T1):

Close to the actual cost of camp. Helps cover staffing, program supplies, food and maintenance costs.

Tier Two (T2):

Partially subsidized cost for families that can pay a little more. Reflects 65-75% of the actual cost of camp.

Tier Three (T3):

Lowest cost of the program. Reflects approximately 50% of the actual cost of camp.

Additionally, GSCI offers camp scholarships ("camperships"). When registering for a camp session, it will ask you if you want to apply for a camp scholarship. Once you check "yes," there will be a form to complete. The application is reviewed and you will be contacted as to acceptance and the amount of scholarship awarded. All information is confidential. Campers can only receive one camp scholarship per camp, per summer.

GSCI follows the income guidelines from the USDA for free or reduced lunches when awarding camp scholarships. If you meet the *free lunch* guidelines, the camper receives a full scholarship or the amount requested, minus the registration fee of \$25. If you meet the *reduced lunch* guidelines, the camper receives a 50% camp scholarship. If you do not meet these guidelines, your request is reviewed by staff and you will be notified of amount received.

If a camper has earned cookie dough or nutty bucks, it will be applied before a camp scholarship is awarded. If they have used their cookie dough or nutty bucks, the camp scholarship will be awarded minus the amount earned.

Note: Some camp sessions with specialized activities such as field trips, travel, or other extra experiences may have additional fees. These will be noted in the camp session description.



*Get \$15 off of Day Camp and
\$25 off of Overnight Camp
when you register by March 5!*



Day Camp Before and After

GSCI charges a fee for before and after care. The cost is the same regardless of flexible pricing or whether or not you are a current Girl Scout. Before Care runs from 7:30am to 9am, and After Care runs from 4pm to 5:30pm. Before and After Care is only \$25 for a week.

Girl Scout Cookies can pay for Camp

Girl Scout programming is powered by the Girl Scout Cookie Program. The Cookie Program helps to upkeep our camp properties and is a great way for Girl Scouts to help pay for their camp session! Cookie Dough earned through the Cookie Program can be applied as payment for any camp session or can be used in the Trading Post. (Please note, the \$25 camp session deposit cannot be paid for using Cookie Dough.)

- 400 boxes could pay for one person to attend Family and Troop Events
- 500 boxes could pay for one week of Quincy community day camp
- 1,000 boxes could pay for one week of day camp at Camp Kiwanis, Camp Widjiwagan, or Camp Tapawingo, or a mini-overnight camp at Camp Tapawingo
- 1,500 boxes could pay for one full week of overnight camp
- 1,800 boxes could pay for one week of overnight camp or equestrian overnight camp
- 1,800 boxes could pay for a two-week Counselor in Training overnight camp

Plus you still get all the patches and incentives!

** Numbers are based on selecting Cookie Dough when given the option. Don't forget to bring any remaining Cookie Dough to camp to spend at the Trading Post!*

Accommodations

Campers needing accommodations for food allergies or special medical needs should contact the camp director prior to registering. We try to accommodate all campers' needs.

Medical Records

All campers must submit a completed health history form signed by the parent/guardian and a complete vaccination record or official letter of exemption signed by a doctor. GSCI Camps follow the same requirements put forth by IDPH for public schools.

Overnight campers (3+ nights) must also have a physical completed within 24 months prior to the last day of the camp session. This may be the physician portion of the health history form or simply a copy of a recent physical.

Health Records will be collected at check-in and are kept confidential.

All medications must be turned in at check-in in their original packaging and instructions for administration must be included on the Health Record. Medications will be stored securely and administered by healthcare or trained administrative staff.

Friday Finale

Join us for the Friday Finale at camp each week. Meet your camper's new friends and see skits and songs from the week. Exact time varies from camp to camp. Sign up while registering for your weekly session. For Camp Tapawingo, guests will have the option to add an optional \$5/person lunch to enjoy with their camper.

Trading Post

Campers can learn about budgeting and bring home camp keepsakes or pick up forgotten camp gear (water bottles, bandannas, etc.) with a visit to our Camp Trading Post during their time at camp. To keep all camper possessions secure, any cash, checks, or cookie dough must be deposited into the campers trading post account during the registration or check-in process.

Campers typically spend \$15-\$25 on souvenirs. If trading post money is added online during registration, any unused money will go into our camper financial assistance fund.

Camp T-Shirt



Pre-order the official 2025 summer camp t-shirt to wear while you're at camp and after as a memento of your awesome summer camp experience! Camp t-shirts are \$18 each and can be pre-ordered when you register for any camp session. Deadline to place a camp t-shirt pre-order is May 26.

**T-shirt color is subject to change based on vendor availability.*

Camp Adventure Care Packages

Surprise your Girl Scout at summer camp with a Camp Care Package! These pre-purchased kits include a soft stuffed animal and additional 4-5 camp/activity/art items! Kits are \$40 each and can be purchased when registering for summer camp.

Stay At Camp

Badge Work

Activities coordinate with Girl Scout Journeys and badges. Badges are not included; earned badges may be purchased at your local service center. You will receive a badge sheet at the end of camp with the badge steps completed. Additional steps may have to be completed at home.

Buddy Requests

Overnight campers may request ONE buddy upon registration. Buddies will be placed in the same tent or cabin and will be buddies for as many activities as possible. However, they may not be buddies for all activities depending on group size, dynamics, and schedule. Day campers will be in age-level groups (no buddy requests).

Cell Phones/Electronics

Camp is intentionally technology-free to create an environment where campers can fully immerse themselves in the wonder of nature and build lasting connections with their fellow campers. This break from screens fosters social interaction, encourages physical activity, and allows campers to disconnect from the digital world and reconnect with the simplicity and richness of the great outdoors. Campers are not allowed to bring phones, tablets, smartwatches, headphones, or similar devices. We know it's tough. Releasing your camper into the wild (and our expert care) is new for some, but know your camper is safe and having a great time.

We welcome families to send mail, care packages, and one-way e-mail to their campers. Parents are encouraged to call and speak to the camp director about their camper at any time. In case of emergency or if warranted for any reason, parents/guardians/emergency contact person will be contacted.

Changes in Activities

Our camps are camper-led so the campers help plan activities. Activities may be modified or rescheduled depending on weather, group behavior, or available materials.

Counselor/Camper Ratio

Camper-counselor ratios will be met at all camps. Visit GetYourGirlPower.org for ratios. All counselors use a camp name while at camp.

Meals/Snacks

Day campers at Camp Kiwanis, Camp Widjiwagan and Quincy Community Day Camp must bring a sack lunch daily. Morning and afternoon snacks are provided. Overnight campers receive all meals and snacks.

We do our best to accommodate all allergies and dietary restrictions. We ask that you contact the camp director to discuss any food allergies or accommodations a minimum of two weeks before arrival at camp so we are sure to be prepared!

Facilities

Campers stay in rustic units that are tucked into the woods and typically consist of 6-10 open-air platform tents or 4 rustic cabins. Tents are situated on wooden decks on the ground and are approximately 12' x 14' with weather-treated canvas sides and roofs. Each tent contains four sleeping cots with mattresses and each cabin contains 10 sleeping cots with mattresses. One rustic unit house that sleeps up to 24 will be used for some summer sessions at Camp Tapawingo.

All of our facilities have a shower house. Security lighting is located throughout camp.

Activity Progression

Activities at GSCI Camps are designed to be progressive - new challenges and new activities become available as campers attend more camp sessions and gain more skills. This ensures campers are both staying safe and continuing to learn and try new things every year. It also keeps camp engaging and FUN! This means campers in the first grade may do substantially different activities from middle school campers. Read more about some of our favorite outdoor activities below. View the description for your session to see what activities campers will be doing during specific weeks.

Archery

Archery is a challenging and engaging activity available at all of our camps. While attempting to hit the bullseye, campers gain valuable practice in patience, concentration, and sportsmanship. Archery requires both strength and hand-eye coordination that is still developing in younger campers. For this reason, Daisy (K-1st grade) campers use alternatives such as sling shots or nerf-style archery sets.



Challenge Course

The challenge courses at Camp Tapawingo and Camp Widjiwagan are a great way to step outside your comfort zone and test your limits! The high ropes activities are designed for girls in middle and high school. The low or ground team building courses are designed for Juniors and above. These restrictions are for safety reasons. Not all teen camps will participate in these unless the activity is listed in the camp description.

Canoeing

Canoeing is an excellent way to explore the outdoors! All camps have canoeing available. Due to the strength and coordination required to maneuver a canoe, Daisies will be passengers when boating. All campers will learn the basics of how to be safe around boats and water and how to do basic canoe strokes. Older campers may progress to rescues, advanced strokes such as the J, Sweep, Pry, Draw, and more. Travel campers may go on longer canoe expeditions where they will learn how to safely paddle and portage.



Climbing Wall

The climbing walls at Camp Tapawingo and Camp Widjiwagan are designed for Campers entering 2nd grade and older. The equipment and design of the wall is made specifically for campers 4' or taller. Climbing Walls are located at Camp Tapawingo and Camp Widjiwagan.

Girl-Led Planning

All campers participate in Girl-Led Planning on the first day of camp. Each group discusses what activities they want to do at camp. We encourage campers to come with ideas in mind and be creative! Maybe you want your group to write and perform a play? Maybe you want to create a camp-wide scavenger hunt? Maybe you want to have a costume party in the lodge? Maybe you want to make sure some camp classics are done as well - archery, tie-dye, friendship bracelets, stargazing or a night hike? Bring it up and your counselors will attempt to work it into your schedule. Girl-Led Planning helps campers take ownership of their experience while promoting collaboration and teamwork.

While we do our best to include all Girl-Led Planning ideas and requests, if you want assurance that you will do a particular activity while at camp, be sure it is in your session description.



Our Camps

Camp Kiwanis

301 Sugar Lane, Mahomet

Camp Kiwanis is a 55-acre forested camp facility adjacent to Lake of the Woods Forest Preserve and the American Heritage Museum.

Located 12 miles from Champaign, it features three lodges. Environmental education, creative arts, canoeing, and archery are highlights of the programs offered here.



Camp Widjiwagan

71 Wienold Lane, Springfield

Camp Widjiwagan, a 67-acre camp facility on Lake Springfield, is located six miles south of Springfield.

The facility features an adventure course with a 40-foot climbing tower and zip line, three main lodges, an in-ground swimming pool, lake access for boating, platform tents, covered wagons, and an arts and crafts shack.

Programming highlights include swimming, canoeing, creative arts, outdoor living skills, archery, and environmental education.



Camp Tapawingo

1450 Hickory Point Road, Metamora

Camp Tapawingo is a 640-acre camp facility located 15 miles from Peoria. The cornerstone of this property is its Equestrian Center where campers learn horseback riding skills and horse care. The Center includes a state-of-the-art stables, an indoor air-conditioned classroom, and an 80'x160' indoor riding arena with an observation area. Mary Morgan Lodge, a 12,000 square-foot multi-level, air-conditioned dining hall, trading post and program center, is the point where all campers gather for meals.

Camp Tapawingo also features an in-ground pool, adventure course, ropes course, archery, canoeing, and miles of hiking trails. Campers utilize three main rustic living units - Setting Sun, Shining Star, and Spirit Cabins. All units have indoor bathrooms and running water.



GSCI camps are proud to be accredited by the American Camp Association (ACA) and meet high standards for program design and activities, site and food service, transportation, health and wellness, operation management, and human resources. ACA accreditation means that the camp you are considering undergoes a thorough annual review of its operation—from staff qualifications and training to emergency management.



GSCI is accredited by the Certified Horsemanship Association (CHA). Accreditation means that GSCI voluntarily requests CHA to review our equestrian facilities, program, and management to deem it as meeting CHA standards. The purpose of CHA is to promote excellence in safety and education for the benefit of the entire horse industry.

Meet Your Camp Staff



Sara "Squatch" Tate

Director of Program Events & Camp

309-214-1375 | state@girlscouts-gsci.org

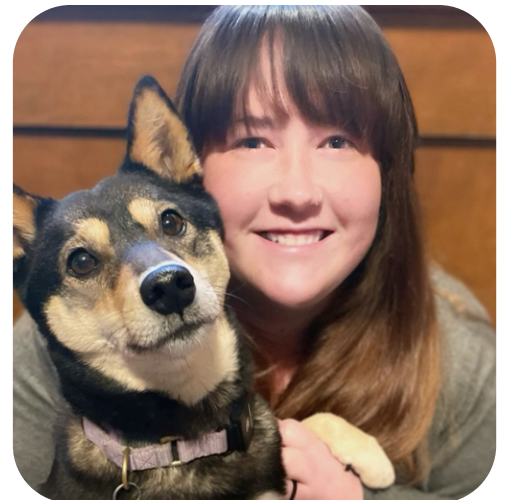
Squatch can't wait to roam around to each of our three camps this summer to visit with new and seasoned campers! Camp is a truly magical place that provides a place for everyone to feel connected with nature and their fellow Girl Scouts. She always looks forward to campers sharing their fun camp moments with her and to hear camp songs being sung throughout camp once again. Squatch also can't wait to hear that southern accent that the campers magical pick up at some of our camps. She can't wait to see y'all real soon!

Kelsey "Cupcake" Parker

Camp Kiwanis Director

217-273-4287 | kparker@girlscouts-gsci.org

Cupcake will be overseeing her third year at Camp Kiwanis, with a focus on fostering an inclusive and sustainable camp environment. What she cherishes most is witnessing campers try new things and excel, embodying the spirit of discovery and joy that makes Camp Kiwanis a special place for adventure and personal growth. With that, she's committed to introducing exciting, new activities. Come try something different this summer!



Abigail "Fidget" Smith

Camp Widjiwagan Director

217-953-0300 | asmith@girlscouts-gsci.org

Fidget is excited for her second summer at camp and her first summer as Widjiwagan's director. She is excited to empower girls to be their best selves and create a safe place for all campers to learn and grow. Camp is the perfect place for every girl to try new things, build independence, venture outside of their comfort zone, and build lasting friendships. Come experience the magic of Camp Widjiwagan this summer!



Meet Your Camp Staff



Sarah "Freckles" Roberts

Camp Tapawingo Director

217-299-0108 | sroberts@girlscouts-gsci.org

Freckles is excited to return to Tapawingo for her tenth summer working at camp! This will be her third summer as Tapawingo's Camp Director. This summer she hopes to keep the loved camp traditions that makes camp magic come alive and that camp brings many new experiences to help girls build courage, confidence, and character. Her favorite camp activities are archery, hiking, and high ropes course. She hopes you find your new favorite activity at camp this summer!

Jessica "Hoops" Groszek

Camp Tapawingo Equestrian Manager

217-720-2101 | jgroszek@girlscouts-gsci.org

Hoops is excited for her ninth summer at Camp Tapawingo! As the Equestrian Manager she has learned that horses are some of the most amazing teachers for youth. They teach responsibility, build confidence, and bring out compassion; getting our youth one step closer to being the best future leaders. "The most rewarding part of what we do is watching campers overcome their fears. The moment a camper realizes they can control a 1,000+ pound animal, you get to witness pure joy on their face and a smile from ear to ear. Nothing beats that feeling!" Hoops can't wait for you to come to the barn and meet our wonderful horses.



Janet "Flower" Ozuna

Tapawingo Equestrian Program Specialist

309-229-1433 | jozuna@girlscouts-gsci.org

Flower has been a volunteer and facilitator for the Camp Tapawingo Equestrian Center since 2015 when she donated her mare "Beauty" to the Program. She worked as a Summer Camp Horse Counselor in 2022 and 2023, taking on the full-time position of Specialist in the fall of 2023. For as long as she can remember, Flower has had a love for horses. She has owned and worked with horses for over 40 years and enjoys nothing more than sharing her knowledge and passion for these amazing animals with campers.

Camp Readiness Quiz

Take this quiz with a parent or caregiver to help you both decide what kind of outdoor experience is your best fit this summer! Keep track of your points using the scale, then add up the points and compare your score to our recommendations. Be honest, there are no right or wrong answers! We just want to make sure you have the best camp experience possible, starting with getting you to the right camp! Also, be aware that this is just a recommendation. You and your family know you and your comfort level best.

Point Scale

1 = Not yet

2 = Maybe

3 = You bet!

1. Can you stay overnight at a friend's house without missing your family or feeling lonely or sad?



2. Can you take care of personal needs, like shampooing and brushing your own hair?



3. Are you willing to try new foods that you haven't eaten before?



4. Do you enjoy outdoor activities such as swimming, hiking, and sleeping in a tent?



5. Can you go without TV, air conditioning, a computer, and a phone?



6. Can you ask an adult for help when you need something?



7. Can you make your own bed and keep track of your belongings?



8. Do you like to meet new people and interact with others who may be different from you? *



9. Are you brave during thunderstorms, when you see a spider, or when you hear strange noises at night?



10. Are you excited to go to camp?



Less than 18 points

You are ready to try troop camping or family activities.

18-25 points

You are ready to try overnight camp! Pack your adventurous spirit and we'll see you this summer! If five days is too much, try a shortened mini-overnight session.

26+ points

You hear the call of overnight camp or must be an experienced camper! It sounds like you're ready for your favorite camp session!

**GSCI camps welcome campers and staff from diverse backgrounds including races, religions, socioeconomic status, gender expressions, etc. Attendees should be open and accepting of interacting with others who are different than them.*

A Taste of Camp

Not ready for a full week of camp but still want to experience what camp is all about? Check out these awesome programs we have that give you a taste of camp in a shorter format!

Try It Out! **DBJC**

April 25, 6:30pm – April 26, Noon
Camp Tapawingo, Metamora

Ever wonder what it would be like to spend the week at summer camp but you're a little nervous? Want to try it out first before committing to a full week? Take a trip to Camp Tapawingo to discover what we have to offer! Spend the night in a platform tent, cabin, or unit house just like you would during summer camp. You'll have a chance to create some creative camp crafts such as tie dye, candles and more! You'll even have a chance to go on a hike, take aim at the archery range and enjoy a campfire treat. Hope to see you there!

Please note: An adult must attend the event with Girl Scout. Please eat dinner before arriving on Friday evening. Meals provided at the event will be an evening snack, breakfast, and a morning snack. Daisies will have an age appropriate alternative for archery. Fun patch is included.

\$25/Girl Scout • \$28/non-member • \$10/adult
Min/Max: 15/30 youth • 10/20 adults
Register by April 13



Adventure Seekers **JCS**

April 26, 4pm – April 27, 10am
Camp Widjiwagan, Springfield

Adventure awaits at this fun-packed overnight. Paddle on Lake Springfield, cook dinner over the fire, reach the top of the climbing wall, and sing camp songs - all with your Girl Scout besties.

We are in need of (up to 7) adult participants to supervise groups of girls at this event. Interested adults should register normally. Juniors will complete steps toward earning their Camper Badge and Cadettes will complete steps toward earning their Climbing Adventure Badge.

\$30/Girl Scout • \$33/non-member • \$10/adult
Min/Max: 10/30 youth • 2/7 adults
Register by April 13

Discover Day Camp **DBJC**

May 10, 10am-2pm
Camp Widjiwagan, Springfield

Get a sneak peak into the world of day camp at Camp Widjiwagan. Are you nervous about summer camp or can you hardly wait? We can help with those camp jitters with a introduction to day camp. This is the perfect opportunity to try something with new with your grownup alongside you. You'll get a chance to canoe on Lake Springfield, take a shot at the archery range, and make a campfire snack.

\$15/Girl Scout • \$18/non-member • \$0/adult
Min/Max: 10/30 youth • 5/15 adults
Register by May 4



Day Camps

Attend camp during the day and go home at night.



Day camp is the perfect starter camp for campers who want to get comfortable in the outdoors and who are interested in exploring new activities close to home.

Before and after care is available at Camp Kiwanis, Camp Tapawingo, and Camp Widjiwagan for an additional fee of \$25 per week. Before and after care is available at no additional fee for Quincy Community Day Camp.

Day campers must bring a sack lunch daily; snacks are provided.

Typical Day Camp Schedule



Camp Kiwanis Day Camps

Camp Creativity

Monday, June 9 - Friday, June 13

This camp is all about expressing yourself through a world of creativity. From painting and sculpting to crafting and storytelling, you'll explore different art forms and techniques each day. Get hands-on with exciting projects, collaborate with fellow campers, and design your own masterpieces to take home! Whether you're a beginner or an art enthusiast, you'll find inspiration everywhere—so grab your brushes, imagination, and get ready to create something amazing! Let your creativity flow this summer!

All levels will complete their Makers Badge Set.

Entering grades 1-5 Min/Max: 15/30

Girl Scout	T1: \$275	T2: \$225	T3: \$175
Non-Girl Scout	T1: \$300	T2: \$250	T3: \$200



Camp of Clues

Monday, June 16 - Friday, June 20

Put on your detective hat and get ready for an adventure! This camp is all about solving puzzles, cracking codes, and uncovering hidden secrets. You'll work with your fellow campers to follow mysterious trails, piece together clues, and solve thrilling mysteries each day. From scavenger hunts to escape room-style challenges, every activity will sharpen your detective skills. By the end of the week, you'll be a master sleuth, ready to crack any case that comes your way!

Brownies will complete their Senses Badge and Juniors will complete their Detective Badge.

Entering grades 1-5 Min/Max: 15/30

Girl Scout	T1: \$275	T2: \$225	T3: \$175
Non-Girl Scout	T1: \$300	T2: \$250	T3: \$200

Animal Adventures: Wildlife Week

Monday, June 23 - Friday, June 27

Get ready to go wild! This camp is perfect for animal lovers who want to explore the amazing world of creatures big and small. Each day, you'll learn about different animals. Meet special animal guests, discover cool facts about habitats and ecosystems, and even build your own wildlife-friendly creations. From furry friends to feathered flyers, you'll have a blast discovering the wonders of the animal kingdom! Go wild with us!

Brownies will complete their Pets Badge and Juniors will complete their Animal Habitat Badge.

Entering grades 1-5 Min/Max: 15/30

Girl Scout	T1: \$275	T2: \$225	T3: \$175
Non-Girl Scout	T1: \$300	T2: \$250	T3: \$200



Adventure Cove

Monday, July 7 - Friday, July 11

Dive into an unforgettable week at camp, where magical mermaids and daring pirates rule the seas! Campers will enjoy thrilling treasure hunts, create ocean-themed crafts, and set sail (or rather canoe) at Lake of the Woods. Plus, a special trip to the waterpark will add on to the boatload of fun. Whether you like flipping your fins or walking the plank, this camp is perfect for those who love both adventure and the sea!

Brownies will complete their Letterbox Badge and Juniors will complete their Paddle Boat Design Badge.

Entering grades 1-5 Min/Max: 15/30

Girl Scout	T1: \$290	T2: \$240	T3: \$190
Non-Girl Scout	T1: \$315	T2: \$265	T3: \$215

Enchanted Forest: Fairytale Adventure

Monday, July 14 - Friday, July 18

Journey through a whimsical forest where fairies flutter, talking animals share secrets, and every corner holds a new tale. Each day, you'll embark on enchanting quests, create charming crafts, and learn about the mystical creatures that dwell in this magical land. Immerse yourself in captivating stories, join a scavenger hunt for hidden treasures, and participate in whimsical games inspired by your favorite fairy tales. With imagination as your guide, you'll weave your own magical story while making friendships that sparkle like stardust!

Brownies and Juniors will complete their Design with Nature Badge.

Entering grades 1-5

Min/Max: 15/30

Girl Scout	T1: \$275	T2: \$225	T3: \$175
Non-Girl Scout	T1: \$300	T2: \$250	T3: \$200



Always Be Prepared

Monday, July 21 - Friday, July 25

Learn how to handle everyday surprises with confidence! Discover how to put together a handy emergency kit, stay safe during storms, and solve fun challenges that teach you how to keep cool in tricky situations. You'll also practice simple first aid, learn smart communication tips, and create a safety plan—all while making new friends and having a blast! This camp is all about building confidence and being prepared for anything life brings, in a fun and friendly way!

Brownies and Juniors will complete their First Aid Badge.

Entering grades 1-5

Min/Max: 15/30

Girl Scout	T1: \$275	T2: \$225	T3: \$175
Non-Girl Scout	T1: \$300	T2: \$250	T3: \$200



Let the Water Games Begin Again!

Monday, July 28 - Friday, August 1

Make a splash at Camp Kiwanis! This will be a whole week of competitions involving the wonders of water that will test your muscles, brains, and creativity. We'll take a break from all the games for a field trip to a local water park. After all the points have been tallied, the team with the most points will be crowned the third annual winners of the coveted Kiwanis Cup. Don't miss out on the chance to make your splash and have your name displayed on the trophy all year round!

Brownies will complete their Fair Play Badge and Juniors will complete their Practice with Purpose Badge.

Entering grades 1-5

Min/Max: 15/30

Girl Scout	T1: \$290	T2: \$240	T3: \$190
Non-Girl Scout	T1: \$315	T2: \$265	T3: \$215



Check out all Camp Kiwanis has to offer at our Virtual Camp Q&A:

January 15 | 5:30pm

March 3 | 5:30pm

May 6 | 5:30pm

Kiwanis Day Camp Assistants

Do you love camp but are ready for more responsibility? Join us as a Day Camp Assistant. You'll get the inside scoop on running Girl Scout Camp and have the opportunity to assist camp staff with activities. Take the challenge and start your journey to leadership this summer!

Entering grades 6-8

Min/Max: 0/5

Camp Creativity

Monday, June 9 - Friday, June 13

T1: \$235 T2: \$185 T3: \$135

Camp of Clues

Monday, June 16 - Friday, June 20

T1: \$235 T2: \$185 T3: \$135

Animal Adventures: Wildlife Week

Monday, June 23 - Friday, June 27

T1: \$235 T2: \$185 T3: \$135

Adventure Cove

Monday, July 7 - Friday, July 11

T1: \$235 T2: \$185 T3: \$135

Enchanted Forest

Monday, July 14 - Friday, July 18

T1: \$235 T2: \$185 T3: \$135

Always Be Prepared

Monday, July 21 - Friday, July 25

T1: \$235 T2: \$185 T3: \$135

Let the Water Games Begin Again!

Monday, July 28 - Friday, August 1

T1: \$235 T2: \$185 T3: \$135



Counselor In Training (CIT)

Available every week of camp

Ready to take your camp experience to the next level? The Counselor in Training (CIT) program is your chance to step into the exciting world of camp leadership while still having tons of fun! As a CIT, you'll learn how to be a leader, work with younger campers, and help plan and run awesome activities—think games, crafts, and campfire fun! You'll get hands-on experience supporting counselors and making camp a blast for everyone, all while still getting to enjoy your favorite camp traditions like hiking, canoeing, and making new friends. Plus, when you complete the program, you'll earn your CIT 1 pin to show off your new skills and leadership potential. Come join the CIT adventure and start your journey to becoming an amazing camp counselor! CITs will be required to attend a training on June 5th. If they are unable to make that training, we will make other arrangements for them.

Prerequisite: Camp Director's Approval. Participants must submit a teen leadership application to be placed into the camp, including a lesson plan for a unique camp activity and one reference letter. Visit GetYourGirlPower.org for application. After your application has been approved, you will receive a link to register.

Entering grades 9-10

Min/Max: 1/3

Girl Scout T1: \$100 T2: \$100 T3: \$100

Non-Girl Scout T1: \$100 T2: \$100 T3: \$100



Quincy Community Day Camp

Top Secret Spy Camp

Monday, June 9 - Friday, June 13 | 8:30am-4:30pm

Camp Sacajawea - 4307 Ghost Hollow Road, Quincy

Bring your sleuthing skills and investigative skills to this year's Quincy Day Camp! Girl Scouts will get the opportunity to help solve the daily mysteries at camp. Get excited for lots of top-secret daily surprises! Get the opportunity to learn important, scientific experiments that happen in real investigations, including fingerprinting, coding, mysteries and more! *This camp will include two afternoons at the pool, as well as a Thursday night Mystery Pool Party and dinner. Bring your own lunch. Two snacks will be provided daily. Before and after care provided with no additional cost. Fun Patch included.*

Entering grades 1-5

Min/Max: 75/100

\$115/Girl Scout | \$140/Non-Member

Top Secret Spy Camp Counselor in Training (CIT)

Monday, June 9 - Friday, June 13 | 8:30am-4:30pm

Camp Sacajawea - 4307 Ghost Hollow Road, Quincy

Do you love camp but are ready for more responsibility? Join us as a Counselor in Training. You'll get the inside scoop on running Girl Scout Camp and have the opportunity to assist camp staff with activities. Take the challenge and start your journey to leadership this summer!

All program levels will earn a fun patch. CITs must bring a sack lunch and refillable water bottle each day.

Entering grades 6-12

Min/Max: 4/8

\$80/Girl Scout | \$105/Non-Member



Camp Tapawingo Day Camp

Bits n' Pieces

Monday, July 7 - Friday, July 11 | 9:00am-4:00pm

Try a bit of everything during this action-packed day camp. Cool off while playing swimming games in the pool. Slip down the slip 'n slide or play around while canoeing. Create some campfire treats during our Wednesday cookout lunch while your tie-dye dries. After hiking with trail mix in hand, meet some of the animals who live at the barn. And of course it wouldn't be camp without songs, games, and friendship bracelets!

Campers will be split into groups by age. If you have a buddy request, be sure both buddies list each other. Optional overnight is available on Thursday for an extra \$35.

Entering grades 1-6	Min/Max: 18/36		
Girl Scout	T1: \$295	T2: \$245	T3: \$195
Non-Girl Scout	T1: \$320	T2: \$270	T3: \$220

Horse Tales

Monday, July 7 - Friday, July 11 | 9:00am-4:00pm

Grab your imagination and mount your trusty steed in make believe adventures based upon popular fairy tales! In a storytelling adventure like no other, escape the tower, chase villains, and help break spells! Engage in friendly challenges that bring the magic of these fairy tale stories to life. From an enchanted scavenger hunt to a charming horseshoe dreamcatcher, this camp is filled with magical games and activities that'll be sure to fill your wishes with happily ever afters. There will also be some time spent at campfires, singing songs and telling stories. *Campers will complete their Junior Horseback Riding Badge. Optional overnight is available on Thursday for an extra \$35.*

Entering grades 4-5	Min/Max: 5/10		
Girl Scout	T1: \$335	T2: \$285	T3: \$235
Non-Girl Scout	T1: \$360	T2: \$310	T3: \$270

Optional before and after care is available for an additional \$25 fee.



Check out all Camp Tapawingo has to offer at our Virtual Camp Q&A:

February 5 | 6pm
March 10 | 6pm
April 2 | 6pm



Looking for the stepping stone between day and overnight camp? Check out Camp Eclipse! This unique camp experience starts as a day camp and eases the camper into the overnight experience at the end of the week! Learn about this Camp Tapawingo exclusive camp on page 25!

Camp Widjiwagan Day Camps

Mad Scientists

Monday, June 9 - Friday, June 13

Grab your lab coats and goggles-the lab is ready!

Explore the exciting world of science, technology, engineering, and math with hands-on experiments, cardboard boat races in the pool, robots, and car-themed badgework. Campers will embark on a week of thrilling activities, challenges, and team projects to unlock their curiosity, discover new skills, and become confident problem-solvers—all while having a blast.

Daisies will complete their Model Car Badge, Brownies will complete their Race Car Badge, and Juniors will complete their Balloon Car Badge.

Entering grades 1-5		Min/Max: 15/30		
Girl Scout	T1: \$275	T2: \$225	T3: \$175	
Non-Girl Scout	T1: \$300	T2: \$250	T3: \$200	



Art Adventure

Monday, June 16 - Friday, June 20

Join us for a fun-filled week of creativity, color, and artistic expression-an Arts Adventure! We will explore dance, music, and art the camp way. Learn your new favorite camp songs, make a simple instrument, show off your moves with a dance workshop from our friends at Copper Coin Ballet Company, and end the week with a mini art show. Unleash your inner artist and let your creativity run wild!

Brownies will complete their Dancer Badge and Juniors will complete their Musician Badge.

Entering grades 1-5		Min/Max: 15/30		
Girl Scout	T1: \$275	T2: \$225	T3: \$175	
Non-Girl Scout	T1: \$300	T2: \$250	T3: \$200	

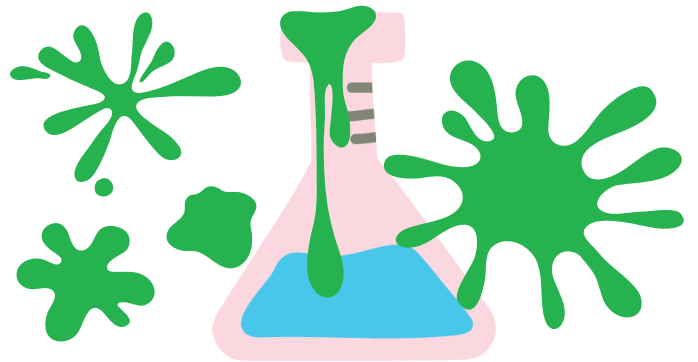
H2O

Monday, June 23 - Friday, June 27

You know it, you love it, and it's back again...it's H2O! Join us for the most popular week of camp filled with water games, boating, swimming, and the much-anticipated trip to Knight's Action Park. Campers will go head to head with team water challenges, paddle on Lake Springfield, and try some games in the pool. Meet you at the dock-don't forget your towel!

Daisies will complete their First Aid Pin. Brownies and Juniors will complete their First Aid Badge.

Entering grades 1-5		Min/Max: 15/30		
Girl Scout	T1: \$305	T2: \$255	T3: \$205	
Non-Girl Scout	T1: \$330	T2: \$280	T3: \$230	



Icky Sticky Ooey Gooney

Monday, July 7 - Friday, July 11

Welcome to Camp Icky Sticky Ooey Gooney, where messes are the main event and fun is guaranteed. This sticky, slimy, and wacky week is designed with extra messes in mind. Make some bright green Oobleck, team up for a shaving cream war, turn up the bubbles with a foam party, and get muddy in the creek. There's no telling how messy we can get!

Daisies and Juniors will complete their Design with Nature Badge and Brownies will complete their Senses Badge.

Entering grades 1-5		Min/Max: 15/30		
Girl Scout	T1: \$275	T2: \$225	T3: \$175	
Non-Girl Scout	T1: \$300	T2: \$250	T3: \$200	

Splash Zone

Monday, July 14 - Friday, July 18

Warning: Participation in Splash Zone may result in fun, memories, and getting completely soaked
Suit up for a week of fun in and out of the pool. We will beat the heat with team water relays, a giant slip and slide, and an epic water balloon fight. Campers will explore the other side of water with a visit from Take Me Fishing to help us cast into Lake Springfield. Ready, set, SPLASH!

Brownies will complete their Fair Play Badge and Juniors will complete their Practice with Purpose Badge.

Entering grades 1-5		Min/Max: 15/30	
Girl Scout	T1: \$275	T2: \$225	T3: \$175
Non-Girl Scout	T1: \$300	T2: \$250	T3: \$200



Animal Antics

Monday, July 21 - Friday, July 25

Where are the wild things? Camp Widjiwagan, of course! Get ready for a wild adventure through the animal kingdom, exploring diverse habitats, learning about fascinating creatures, and engaging in fun activities designed to inspire a love for wildlife and conservation. We will have a special animal visitor to learn about animal conservation and habitats!

Daisies will complete their Animal Observer Badge, Brownies will complete their Pets Badge, and Juniors will complete their Animal Habitat Badge.

Entering grades 1-5		Min/Max: 15/30	
Girl Scout	T1: \$285	T2: \$235	T3: \$185
Non-Girl Scout	T1: \$310	T2: \$260	T3: \$210



Camp Chefs

Monday, July 28 - Friday, August 1

The chef is in! We have the perfect recipe for a good time at Camp Widjiwagan. Throughout the week, we'll gather around the kitchen, tie on our aprons, and dive into hands-on cooking activities while also discovering healthy snacks, and exploring the art of outdoor cooking. We will have a visit from special culinary guests at 4-H to lead us in hands-on projects in the kitchen. What will you whip up on our cooking adventure?

Brownies will complete their Snacks Badge and Juniors will complete their Simple Meals Badge.

Entering grades 1-5		Min/Max: 15/30	
Girl Scout	T1: \$275	T2: \$225	T3: \$175
Non-Girl Scout	T1: \$300	T2: \$250	T3: \$200

Check out all Camp Widjiwagan has to offer at our Virtual Camp Q&A:

January 8 | 5:30pm
March 10 | 12pm
May 8 | 5:30pm

Widjiwagan Day Camp Assistants

Do you have a passion for camp that you want to share with others? Join us as a Day Camp Assistant and step into more responsibility this summer. You'll gain confidence in mentoring younger campers, lead games and activities, and learn leadership fundamentals. Are you ready for the challenge?

Entering grades 6-8

Min/Max: 5/10

Mad Scientist

Monday, June 9 - Friday, June 13

T1: \$220 T2: \$170 T3: \$120

Art Adventure

Monday, June 16 - Friday, June 20

T1: \$220 T2: \$170 T3: \$120

H2O

Monday, June 23 - Friday, June 27

T1: \$250 T2: \$200 T3: \$150

Icky Sticky Ooey Gooley

Monday, July 7 - Friday, July 11

T1: \$220 T2: \$170 T3: \$120

Splash Zone

Monday, July 14 - Friday, July 18

T1: \$220 T2: \$170 T3: \$120

Animal Antics

Monday, July 21 - Friday, July 25

T1: \$230 T2: \$180 T3: \$130

Camp Chefs

Monday, July 28 - Friday, August 1

T1: \$220 T2: \$170 T3: \$120



Overnight Camps

Stay overnight at Camp Tapawingo!



At overnight camp, campers can explore leadership, seek adventure, and develop a deep appreciation for nature.

Check-in will be on Sunday afternoons between 2-3:30pm. Please plan for around 1 hour for the process. For mini overnight camps, check-in will be Sunday afternoon from 12-1:30pm.

Check-out is Friday from 12-2pm. Please join us at 11:30am for our Friday Finale when campers share some of their favorite parts of the week. Family and friends are welcome to bring a lunch or can add on lunch for \$5/person when registering. For mini overnight camps, check-out is Tuesday 4:30-6pm.

Typical Overnight Camp Schedule

7:45-9am
Opening flag ceremony
followed by breakfast

9am-12pm
Girl-planned activities
and adventures

12-2pm
Lunch hour followed by rest hour

2-5pm
Girl-planned activities
and adventures, swimming

5:45-7pm
Closing flag ceremony
followed by dinner

7pm
All-camp activities

Camp Tapawingo Mini Overnight Camps

Pair Up

Sunday, June 29 - Tuesday, July 1

Not sure if you're ready for overnight camp? Pair Up is the perfect place to start. Request a buddy and you are guaranteed placement together. If you're ready to camp solo, come anyways and make plenty of new friends! Fall in love with camp as we sing silly songs, play goofy games, make sweet n' sticky s'mores and tie-dye. This session will leave you begging to stay longer next time!

Please Note: Only one buddy per camper. Both buddies must list their buddy's name on their registration form.

Entering grades 1-4

Min/Max: 6/12

Girl Scout	T1: \$355	T2: \$305	T3: \$255
Non-Girl Scout	T1: \$380	T2: \$330	T3: \$280

Adventure Awaits

Sunday, June 29 - Tuesday, July 1

Calling the bold and adventurous! This extreme mini overnight camp will have you flying through the air as you zip down the zipline, trying your hand with a bow and arrow, and navigating through the woods on a hike, all while making lifelong memories with new friends. You'll even get time to relax at the pool as you reflect on all you've accomplished in a short amount of time!

Entering grades 4-6

Min/Max: 8/16

Girl Scout	T1: \$355	T2: \$305	T3: \$255
Non-Girl Scout	T1: \$380	T2: \$330	T3: \$280



Crafty Campers

Sunday, June 29 - Tuesday, July 1

Connect with your creative side while you create traditional camp crafts during this artistic mini-overnight session. Knot and weave your way through friendship bracelets and lanyards, splash some colors around as you tie-dye a pillowcase, socks, or T-shirts, and design colorful suncatchers from natural objects you collect on a hike. Then turn your creativity towards the campfire as you experiment to create the best s'more! When you're ready to take a break, head to the pool to cool off and splash around.

Entering grades 2-4

Min/Max: 6/12

Girl Scout	T1: \$355	T2: \$305	T3: \$255
Non-Girl Scout	T1: \$380	T2: \$330	T3: \$280



Midnight Mischief

Sunday, June 29 - Tuesday, July 1

This mini overnight camp is for the night-loving teen who likes to stay up late and sleep in. We'll create funky glow in-the-dark art projects, try to find constellations while stargazing, and go on a night hike. See camp transform with the sounds and sights you can only see after everyone else has gone to bed. After sleeping in late you still have time to enjoy camp in the daylight by splashing around at the pool and taking aim at the Archery Range.

Entering grades 6-10

Min/Max: 8/16

Girl Scout	T1: \$355	T2: \$305	T3: \$255
Non-Girl Scout	T1: \$380	T2: \$330	T3: \$280



Camp Eclipse - Solar

Monday, July 7 - Friday, July 11

Start the week with day camp and end the week with overnight camp. This session is ideal for first time or inexperienced overnight campers. Make lifelong friends and enjoy boating, swimming, songs and games. Create some late night campfire treats and your own trail mix for a hike. Pack your sleeping bag and swimsuit, we'll meet you at camp!

On Monday and Tuesday, campers can be dropped off between 7:30-9am and picked up between 4-5:30pm.

On Wednesday, campers can be dropped off to stay overnight and picked up on Friday from 12-2pm.

Campers may be sleeping in platform tents or cabins.

Entering grades 1-3

Min/Max: 6/12

Girl Scout	T1: \$465	T2: \$395	T3: \$325
------------	-----------	-----------	-----------

Non-Girl Scout	T1: \$490	T2: \$420	T3: \$350
----------------	-----------	-----------	-----------

Camp Eclipse - Lunar

Monday, July 7 - Friday, July 11

Start the week with day camp and end the week with overnight camp. This session is ideal for first time or inexperienced overnight campers. Make lifelong friends and enjoy boating, swimming, songs and games. Create some late-night campfire treats and your own trail mix for a hike. Pack your sleeping bag and swimsuit, we'll meet you at camp!

On Monday and Tuesday, campers can be dropped off between 7:30-9am and picked up between 4-5:30pm.

On Wednesday, campers can be dropped off to stay overnight and picked up on Friday from 12-2pm.

Campers may be sleeping in platform tents or cabins.

Entering grades 4-6

Min/Max: 8/16

Girl Scout	T1: \$465	T2: \$395	T3: \$325
------------	-----------	-----------	-----------

Non-Girl Scout	T1: \$490	T2: \$420	T3: \$350
----------------	-----------	-----------	-----------



Camp Tapawingo Overnight Camps

Dabblers

Sunday, June 8 - Friday, June 13

Dabble into a little bit of everything camp has to offer! Enjoy the water as you play games in the pool, explore the ravine and even grab a paddle as you climb into a canoe on Lake Nib. Spend a little time at the barn learning about horses while grooming and also riding! Test your aim at the archery range. Take to new heights on the climbing wall and make a colorful mess while you tie-dye! Finish up the week by staying up late cooking sweet treats over the fire and go on a glow-stick night hike before you sleep under the stars.

Entering grades 4-6		Min/Max: 8/16		
Girl Scout	T1: \$675	T2: \$525	T3: \$400	
Non-Girl Scout	T1: \$700	T2: \$550	T3: \$425	



Eye of the Beholder

Sunday, June 8 - Friday, June 13

Inspiration can come from anywhere- this week it will come from camp. Tap into your creative side during this art filled week. Learn the difference between water based and oil based paints. Experiment with DIY paint brushes during a study of variations on a theme. Explore the basics of wood burning while creating a keepsake ornament. Practice still life sketches while hiking and even make splatter art at the archery range with some paint filled balloons. Between all of the creative fun you'll still have time to relax at the pool. But if inspiration hits- you'll have your sketchbook at hand.

Entering grades 6-8		Min/Max: 8/16		
Girl Scout	T1: \$675	T2: \$525	T3: \$400	
Non-Girl Scout	T1: \$700	T2: \$550	T3: \$425	

Last One Standing

Sunday, June 8 - Friday, June 13

Join us at Camp Tapawingo to learn a few key skills to survive a zombie apocalypse. You'll train to read maps, go orienteering, and scavenge camp to find food for a cookout that was left in the wake of the zombie apocalypse. Put your shelter building skills to the test when you take cover in self-made shelters. Sharpen your skills as you take aim at the archery range, learn to throw a hatchet, and scale the 40ft rock wall. End the week with star gazing and a zombie makeover. Will you be able to survive?

Entering grades 7-12		Min/Max: 6/12		
Girl Scout	T1: \$675	T2: \$525	T3: \$400	
Non-Girl Scout	T1: \$700	T2: \$550	T3: \$425	

Candles and Candy

Sunday, June 15 - Friday, June 20

Put your artistic side to work during this creative camp as we'll be making scented candles, sweet candy treats and brightly colored tie dye. Create a colorful trail mix to snack on during our color hike. Plan a colorful dinner party for the rest of camp. At the end of the week, we'll make stuffed animals, creative snacks and watch a movie at a slumber party. We'll still have plenty of time when you're not creating to splash around the pool and learn some silly camp songs.

Entering grades 2-3		Min/Max: 6/12		
Girl Scout	T1: \$675	T2: \$525	T3: \$400	
Non-Girl Scout	T1: \$700	T2: \$550	T3: \$425	



Trekkers

Sunday, June 15 - Friday, June 20

Explore camp by camping in a new place every night. Enjoy a private pool party and sleep under the stars. Then head out for a night of camping at Big Sky after spending time at the archery range. Finally, it's off to a spa and movie night in the lodge. When you aren't packing for your next move or setting up your tent, you'll have plenty of time to go swimming, paddle a canoe around Lake Nib, learn some new outdoor cooking skills, and play goofy games with your counselors and friends.

Sleeping pads and backpacking packs are welcomed but not required as camp can provide. Not for 1st time campers, campers are encouraged to have attended at least ONE prior overnight camp.

Entering grades 4-6 Min/Max: 4/8

Girl Scout	T1: \$675	T2: \$525	T3: \$400
------------	-----------	-----------	-----------

Non-Girl Scout	T1: \$700	T2: \$550	T3: \$425
----------------	-----------	-----------	-----------

Teen X-treme

Sunday, June 15 - Friday, June 20

Exposure to this camp may result in the participation of extreme camp activities. User may become suspended from cables high on the ropes course. Fire, flame or sparks may be present during a mystery box meal. Use of the pool and canoes may result in excess moisture and challenging obstacles. Caution is recommended during hiking, shelter building, and orienteering. Recommended for outdoor use only. Completion of this camp may result in total personal transformation.

Entering grades 7-12 Min/Max: 8/16

Girl Scout	T1: \$675	T2: \$525	T3: \$400
------------	-----------	-----------	-----------

Non-Girl Scout	T1: \$700	T2: \$550	T3: \$425
----------------	-----------	-----------	-----------

Mermaids

Sunday, June 22 - Friday, June 27

Calling all mermaids! Swim every day, then trade your fins for feet so you can slip 'n slide, toss water balloons and become a shaving cream bunny. Make some mermaid-inspired art and snacks. Learn about how animals move in the water while working on your Wonders of Water Journey. Enjoy the magic of camp in and out of the water!

Entering grades 2-3 Min/Max: 6/12

Girl Scout	T1: \$675	T2: \$525	T3: \$400
------------	-----------	-----------	-----------

Non-Girl Scout	T1: \$700	T2: \$550	T3: \$425
----------------	-----------	-----------	-----------

Night Owl

Sunday, June 22 - Friday, June 27

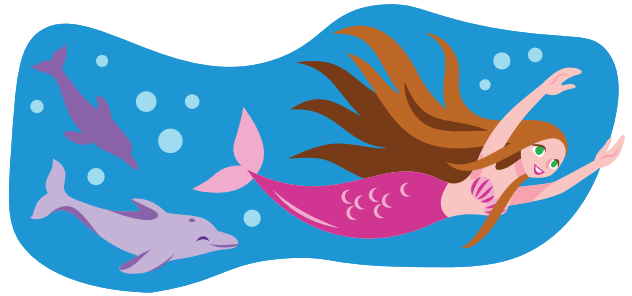
Experience all the fun of a traditional camping session in a whole new way. Stay up late every night and sleep in each morning so you can explore wonders of the natural nocturnal world. What sights, creatures and sounds go unnoticed by day-dwellers? Cookouts, night hikes, evening paddles, stargazing and crafts will round out this session. It's a hoot!

Entering grades 4-6

Min/Max: 8/16

Girl Scout	T1: \$675	T2: \$525	T3: \$400
------------	-----------	-----------	-----------

Non-Girl Scout	T1: \$700	T2: \$550	T3: \$425
----------------	-----------	-----------	-----------



Dolphins

Sunday, June 22 - Friday, June 27

Spend the week relaxing and swimming at the pool. Enjoy an early-morning swim, underwater explorations, and fun water games. Splash around at your own water carnival, plan a picnic lunch by the water, zip down the slip 'n slide, and relax while making colorful lanyards. Be sure to pack a lot of swimsuits!

Entering grades 4-6

Min/Max: 8/16

Girl Scout	T1: \$675	T2: \$525	T3: \$400
------------	-----------	-----------	-----------

Non-Girl Scout	T1: \$700	T2: \$550	T3: \$425
----------------	-----------	-----------	-----------

Outdoor Explorers

Sunday, July 13 - Friday, July 18

Pack your hiking shoes, flashlight, and adventure as we explore Camp Tapawingo this week. Climb to new heights as you scale the 40ft rock wall. Create an animal trail mix to enjoy as you hike the trails at camp. Spend an afternoon picnicking by Lake Nib followed by a pond study to discover what fun things live in the water. Cool off each day by splashing around at the pool.

Entering grades 2-3

Min/Max: 6/12

Girl Scout	T1: \$675	T2: \$525	T3: \$400
------------	-----------	-----------	-----------

Non-Girl Scout	T1: \$700	T2: \$550	T3: \$425
----------------	-----------	-----------	-----------



Ultimate Challenge

Sunday, July 13 - Friday, July 18

Are you seeking a real adventure this summer? Splash through swimming obstacles, paddle through boating battles, and test your aim at the archery range. Cook a mystery box dinner over the campfire. Find your way with compasses and show your courage on a night hike. Before you campout by Bullfrog, scale the challenging 40-foot rock wall. Don't forget to pack your bravery!

Not for first time campers. Campers are encouraged to have attended at least ONE prior overnight camp.

Entering grades 4-6		Min/Max: 4/8		
Girl Scout	T1: \$675	T2: \$525	T3: \$400	
Non-Girl Scout	T1: \$700	T2: \$550	T3: \$425	

Messy Madness

Sunday, July 13 - Friday, July 18

Ready for something a little wild and crazy? Pack your oldest clothes to create all the messy fun you can imagine! Stomp around the muddy creek and woods on a scavenger hunt, break out the face paint for a messy makeover complete with a wacky hair contest. Then get covered from head to toe in a shaving cream fight and paint twister before rinsing off by sliding down a slip 'n slide. All you need is a sense of adventure and a little soap to get clean at the end of the week.

Campers should pack extra clothes that can get really, really dirty!

Entering grades 4-6		Min/Max: 6/12		
Girl Scout	T1: \$675	T2: \$525	T3: \$400	
Non-Girl Scout	T1: \$700	T2: \$550	T3: \$425	



Moonlight Magic

Sunday, July 13 - Friday, July 18

This week is for the night-loving teen who likes to stay up late and sleep in. We'll create funky glow in-the-dark art projects, go stargazing and take night hikes to see who is still up with us. See camp transform with the sounds and sights you can only see after everyone else has gone to bed. Then take a lookup as you work on your space science badges exploring our universe. After a late breakfast enjoy camp in the daylight with a swim, boating, and archery.

Entering grades 6-8		Min/Max: 8/16		
Girl Scout	T1: \$675	T2: \$525	T3: \$400	
Non-Girl Scout	T1: \$700	T2: \$550	T3: \$425	



Princess Pals

Sunday, July 20 - Friday, July 25

Spend the week at Camp Tapawingo like your favorite princesses would! Try your hand at archery like a certain Scottish princess. Climb to the top of the 40ft climbing wall to visit the princess with very very long hair and her friendly chameleon. Enjoy frozen treats perfect for a snow queen. Could you become the next wayfinder learning to canoe across the lake? Practice your tea party manners during our garden party cookout. Finish the week with a royal ball fit for a princess.

Entering grades 4-6

Min/Max: 6/12

Girl Scout	T1: \$675	T2: \$525	T3: \$400
Non-Girl Scout	T1: \$700	T2: \$550	T3: \$425



Wizarding 101

Sunday, July 20 - Friday, July 25

Calling all wizards! Grab your spell book and broom and get ready for a magical week at camp. Once you are sorted into your houses you'll be ready to make your own wand, brew potions, and compete in a quidditch game. You'll hunt for horcruxes and even make your own Marauder's Map.

Entering grades 4-6

Min/Max: 8/16

Girl Scout	T1: \$675	T2: \$525	T3: \$400
Non-Girl Scout	T1: \$700	T2: \$550	T3: \$425



Extreme Cuisine

Sunday, July 20 - Friday, July 25

You and your team of fellow extreme chefs will take on the ultimate cooking challenge. Each day a mystery basket with surprise ingredients will arrive in your unit, and it's up to you to figure out what to do with the contents. Using a variety of cooking methods and lots of imagination, you'll prepare delicious and innovative appetizers, main courses, and desserts!

Entering grades 7-12

Min/Max: 6/12

Girl Scout	T1: \$675	T2: \$525	T3: \$400
Non-Girl Scout	T1: \$700	T2: \$550	T3: \$425



Teen Leadership Overnight Camps

Leader In Training (LIT)

Sunday, July 20 - Friday, July 25

Develop your leadership style at this one-week camp. Endure challenging team games and conquer the low rope teams course. Spend an afternoon shadowing, interviewing, and learning tricks of the trade from the camp staff. Work with your fellow LITs as you make memories for the younger campers. With the support of your counselors and new friends, you'll work on the aMaze Journey, setting a positive example for the younger campers.

Entering grades 7-8		Min/Max: 6/12		
Girl Scout	T1: \$675	T2: \$525	T3: \$400	
Non-Girl Scout	T1: \$700	T2: \$550	T3: \$425	

Counselors in Training I (CIT I)

Sunday, June 15 - Friday, June 20 AND

Sunday, June 22 - Friday, June 27

If you love working with younger campers and hanging out with fellow teen Girl Scouts at camp, you'll love this session! You'll spend the first week improving your camping and leadership skills and observing the counselors in action as you begin the Sisterhood Journey. Week one will feature training and during week two you'll be paired with a unit to lead daily camp activities. As a CIT, you'll have plenty of time to stay up making a late night grilled cheese and playing goofy games. You'll receive your CIT pin in a private ceremony your last night at camp.

Prerequisite: CIT I or Camp Director's Approval. Participants must submit a teen leadership application to be placed into the camp, including a lesson plan for a unique camp activity and one reference letter. Visit GetYourGirlPower.org for application. After your application has been approved, you will receive a link to register.

Entering grades 9-10		Min/Max: 4/8		
Girl Scout	T1: \$1,270	T2: \$1,020	T3: \$770	
Non-Girl Scout	T1: \$1,295	T2: \$1,045	T3: \$795	

Counselors in Training II (CIT II)

Sunday, June 8 - Friday, June 13

If you love everything about camp and would love to become a member of the camp staff one day, CIT II will set you on the path to realizing your dream. Choose your own focus area such as horses, aquatics, or outdoor skills. Learn, work, and grow side-by-side with the experienced camp staff. After you complete the training and planning session, return to camp for up to two apprenticeship weeks.

Apprenticeship Weeks (choose up to 2):

Sunday, June 15 - Friday, June 20

Sunday, June 22 - Friday, June 27

Sunday, July 13 - Friday, July 18

Sunday, July 20 - Friday, July 25

Prerequisite: CIT I or Camp Director's Approval. Participants must submit a teen leadership application to be placed into the camp, including a lesson plan for a unique camp activity and one reference letter. Visit GetYourGirlPower.org for application. After your application has been approved, you will receive a link to register.

Entering grades 11-12		Min/Max: 4/8		
Girl Scout	T1: \$965	T2: \$655	T3: \$505	
Non-Girl Scout	T1: \$990	T2: \$680	T3: \$530	



Camp Fury

Monday, July 21 - Friday, July 25

At Camp Fury, you will join the ranks of firefighters and law enforcement personnel to learn how they ensure public safety for our communities. In this overnight experience you will practice search and rescue skills, learn about crime scenes, repel from buildings, learn handcuffing techniques, self defense skills, and perform hose drills. Participants will be surrounded by females that hold titles within Fire, EMS, and Police Services. At the end of camp, we will celebrate your accomplishments at a graduation ceremony with family and friends.

Must be 14 years old at time of camp.

Entering grades 9-12

Min/Max: 8/13

Girl Scout	T1: \$675	T2: \$525	T3: \$400
------------	-----------	-----------	-----------

Non-Girl Scout	T1: \$700	T2: \$550	T3: \$425
----------------	-----------	-----------	-----------



Camp Tapawingo Equestrian Overnight Camps

Please read the skill level descriptions below thoroughly before registering your camper for an equestrian summer camp. It is important for the safety and satisfaction of all campers, staff, and the horses that campers are in a program that is appropriate to their skill level. Please note that it is better to sign up for a level too low than a level too high as campers will not be permitted to ride above their abilities. This ensures campers, staff, and horses stay safe and have an enjoyable experience.

Beginner

A beginner equestrian camp is designed so that staff are more “hands on” with campers on horseback. We always strongly encourage campers to ride independently so long as they are comfortable and it is safe to do so. However, if the camper needs to be assisted while on their horse; for the safety of all participants (riders, staff, horses), then the proper support will be provided. Generally speaking, this equates to campers that have never been to equestrian summer camp or have been to at least one or an equivalent.



**All attendees
receive a horse
camp fun patch!**



Intermediate

An intermediate summer camp is designed to further the camper's independence from the staff. We encourage campers to ride with as little assistance as possible, while still under the close supervision of staff. If the camper requires aid, we can help as long as is needed, and then back away to allow for the camper to continue to ride unassisted and gain confidence. Generally speaking, this equates to campers that have been to 2 or 3 equestrian summer camps or an equivalent.



Advanced

An advanced equestrian summer camp is designed to help a camper gain full independence. The camper is furthering their riding skills and knowledge of horses through minimal assistance. Under careful supervision, campers will have full and complete independence from staff while working with and around our horses. Generally speaking, this equates to campers that have been to 4 or more equestrian summer camps or an equivalent.



All campers in horse programs will be split into groups based on riding skill. Campers will ride 2-4 times during the week. Excessively hot weather, rain and skill set of the group can affect the amount of ride time. Campers will receive a very well-rounded experience at the barn, including learning proper grooming and the basics of horse, equipment and stable care. Boots and helmets are provided for riding, and campers who wish to bring their own must check with the Equestrian Manager to ensure equipment meets safety standards.

Equestrian Mini Overnight Camps

Ponypalooza ★

Monday, June 29 - Tuesday, July 1

It's party time...pony style! Let's celebrate our equine friends with some pony pampering. Learn how to properly groom a horse which not only makes them look good, but helps them feel good, too. Let's continue to make our horses feel special as we learn how to make horse safe treats. Round out the pony party, by playing games on horseback. The party doesn't have to stop at the barn. Spend some time splashing around at the pool before staying up late dancing the night away at a colorful dance party!

Entering grades 4-6 Min/Max: 5/10
 Girl Scout T1: \$395 T2: \$345 T3: \$295
 Non-Girl Scout T1: \$420 T2: \$370 T3: \$320



Ribbons n' Reins ★

Monday, June 29 - Tuesday, July 1

Did you know colors of ribbons not only signify placement in horse shows but are a way to communicate to other riders about your horse?! Get crafty and create your own horse-themed ribbon for you and your horse to show off while riding. With ribbons complete, it's time to take the reins to learn Western riding and the basics of horse safety, grooming & saddling. In the indoor riding arena, gain the skills to independently control your pony or horse. Then, spend some time around camp having fun swimming, singing songs, and making friendship bracelets.

Entering grades 4-5 Min/Max: 5/10
 Girl Scout T1: \$395 T2: \$345 T3: \$295
 Non-Girl Scout T1: \$420 T2: \$370 T3: \$320



Equestrian Overnight Camps

Paddle n' Saddle ★★

Sunday, June 8 - Friday, June 13

Don't want to choose between boating and horseback riding?! — you don't have to! This camp makes plenty of time for both!! Take to the water in your canoe, learning a variety of paddle strokes at Camp Tapawingo, then pack up to spend a night at Camp Widjiwagan where you will paddle around Lake Springfield. When you're not out on the water, time to saddle up! You'll also get a chance to spend 3 afternoons at the barn. Learn to groom, tack up, and go for a ride. After you're done with your paddle and saddle for the day, jump into the pool and cool off with your friends. Now that's the best of both worlds!

This camp travels to Camp Widji! Juniors will complete their Junior Horseback Riding Badge.

Entering grades 4-6 Min/Max: 6/12

Girl Scout	T1: \$740	T2: \$590	T3: \$465
Non-Girl Scout	T1: \$765	T2: \$615	T3: \$490

Wild West ★

Sunday, June 8 - Friday, June 13

Yee-haw! Welcome to the Wild West. Put on your boots and barn hat as you look toward the horizon for some awesome Western-themed activities and crafts. You'll even have a chance to practice roping a mock steer. Once you've hung up your hat for the day, it's time for some more fun. Head down to the creek to pan for some "gold." There will also be plenty of time for swimming, singing, s'mores, and good ol' storytelling and skits around the campfire. So, saddle up for a week in the West that you soon won't forget!

Juniors will complete their Junior Horseback Riding Badge.

Entering grades 4-6 Min/Max: 6/12

Girl Scout	T1: \$740	T2: \$590	T3: \$465
Non-Girl Scout	T1: \$765	T2: \$615	T3: \$490

Trail ARTventures ★★

Sunday, June 15 - Friday, June 20

Do you love horses? Do you love art? Then let the ARTventure unfold!! Have fun with horses while you expand your artistic talents. Head out on the beautiful camp trails for an up-close nature experience. Be sure to pay close attention to your surroundings! It may spark inspiration for some creative crafts. Back at the barn, you will use your experience from your trail adventures to design your own equestrian themed art projects. Take a break from your creative side while you relax at the pool. At the end of the week, show off some of your artistic creations during Friday Finale!

Camper is required to have attended a previous trail riding equestrian summer camp or has been on (1-2) trail rides before.

Entering grades 7-12 Min/Max: 6/12

Girl Scout	T1: \$740	T2: \$590	T3: \$465
Non-Girl Scout	T1: \$765	T2: \$615	T3: \$490

Horses n' Heights ★★

Sunday, June 15 - Friday, June 20

Jump in for a week of excitement with some camper favorites—horses and heights! Improve your riding skills on horseback as you use your reins to guide your horse through challenging arena games and obstacle courses. After spending some time at the barn, hang up your reins, head over to the challenge course to put on your harness and helmet, and zoom on down the zipline. When you're not at the barn or the challenge course, cool off at the pool, get cozy around a campfire and enjoy many other camp activities.

Camper is required to have previously attended equestrian summer camp and should be comfortable with heights.

Entering grades 7-12 Min/Max: 6/12

Girl Scout	T1: \$740	T2: \$590	T3: \$465
Non-Girl Scout	T1: \$765	T2: \$615	T3: \$490

Trail Mates ★★

Sunday, June 22 - Friday, June 27

Get ready to hit Tapawingo's terrific trails! Have fun with your camp friends and favorite four-legged riding partners as you spend a few hours each day at the barn and out on the trails. Start off the week in the arena brushing up on your riding skills before heading out into the woods on horseback. Be on the lookout for deer, turkey, and other wildlife as you might get lucky enough to spot some while on your ride. Of course there will also be plenty of time for swimming, campfires, and archery.

Camper is required to have attended a previous trail riding equestrian summer camp or has been on multiple (3-5+) trail rides before.

Entering grades 6-8

Min/Max: 6/12

Girl Scout	T1: \$740	T2: \$590	T3: \$465
Non-Girl Scout	T1: \$765	T2: \$615	T3: \$490



Sea Horses ★

Sunday, June 22 - Friday, June 27

Not sure if you'd rather spend your time at camp swimming like a seahorse or riding on horseback? How about both!? Each day at the barn learn the basics of horse care while you groom, tack up and ride with your camp friends. You'll even get to make your very own pool noodle seahorse to take home! Horses can't go in our pool, but we can bring the water fun to them. Help one of our horses beat the heat by giving it a bath. Once you're done pampering your horsey friends, it's your turn to cool off by splashing around in the pool. When your time at the barn is over for the day, enjoy learning camp songs and games, making crafts with friends, and campfires.

Juniors will complete their Junior Horseback Riding Badge.

Entering grades 4-5

Min/Max: 6/12

Girl Scout	T1: \$740	T2: \$590	T3: \$465
Non-Girl Scout	T1: \$765	T2: \$615	T3: \$490

Level 4: Filly ★★★

(Progressive Equestrian Camp)

Sunday, July 13 - Friday, July 18

After a brief review of the information that was covered in previous levels, further your equestrian knowledge by understanding the importance of rider etiquette, effective communication and proper tack care. Regarding tack, get introduced to English riding for one day, learning how it is similar to Western, yet requires a different set of skills for both horse and rider. Back in your Western saddle, utilize mounted exercises to practice horsemanship. Finally, head out onto the trails to test your newly acquired abilities. Don't forget to have fun while splashing around at the pool and creating colorful tie-dye.

This is part of the Progressive Equestrian Camp program, allowing campers to hone in on various skills and responsibilities year after year while continuing with riders that are similar in riding knowledge and experience. Completion of Level 3: Yearling or approval from the Equestrian Manager is required.

Entering grades 7-8

Min/Max: 4/8

Girl Scout	T1: \$740	T2: \$590	T3: \$465
Non-Girl Scout	T1: \$765	T2: \$615	T3: \$490



Trail Masters ★★★

Sunday, July 13 - Friday, July 18

Are you ready to take your trail riding adventures up a notch!? Explore the trails running throughout Camp Tapawingo's 640 acres of woods and wide open fields via horseback for a bit each day...doesn't get much better than that! Assess trail situations, master obstacles you may encounter out on the trail, and even go for a mounted scavenger hunt in the woods. After you've untacked for the day, kick off your boots and try to become a master of some of the other activities that camp has to offer such as swimming, archery, hiking, and cookouts.

Camper is required to have previously attended multiple trail riding equestrian summer camps or has been on many (6+) trail rides before.

Entering grades 8-12

Min/Max: 6/12

Girl Scout	T1: \$740	T2: \$590	T3: \$465
Non-Girl Scout	T1: \$765	T2: \$615	T3: \$490

Tack n' Trail ★

Sunday, July 20 - Friday, July 25

Think you're ready to hit the trails on horseback? A few hours each day at the barn will be spent with your two and four legged friends learning the basics in trail safety, such as the importance of emergency dismounts and leg ups, and the fun of trail riding. When you are out on the trails, keep an eye out for some of the wildlife that calls Tapawingo their home. You're bound to see something! Also, be prepared to splash in the pool, make new camp friends and even hike around camp on foot. It'll be "trail-tastic"!!

Juniors will complete their Junior Horseback Riding Badge.

Entering grades 4-6	Min/Max: 6/12		
Girl Scout	T1: \$740	T2: \$590	T3: \$465
Non-Girl Scout	T1: \$765	T2: \$615	T3: \$490



Boots n' Bows ★★

Sunday, July 20 - Friday, July 25

Split your time this week between some of the best spots at camp! At the barn, ride in the arena learning basic horsemanship skills and safety. At the archery range, learn terminology, good form, and work to perfect your shot! Whether there's a bow in your hand or boots on your feet, you'll spend time learning the ins and outs of becoming an archer and gaining confidence in the saddle. Don't worry, there will be plenty of time to hang out at the pool, relax around the campfire, and make friendship bracelets.

Juniors will complete their Junior Horseback Riding Badge.

Entering grades 5-6	Min/Max: 6/12		
Girl Scout	T1: \$740	T2: \$590	T3: \$465
Non-Girl Scout	T1: \$765	T2: \$615	T3: \$490



Travel Camps

Road Trippers

Sunday, July 13 - Friday, July 18

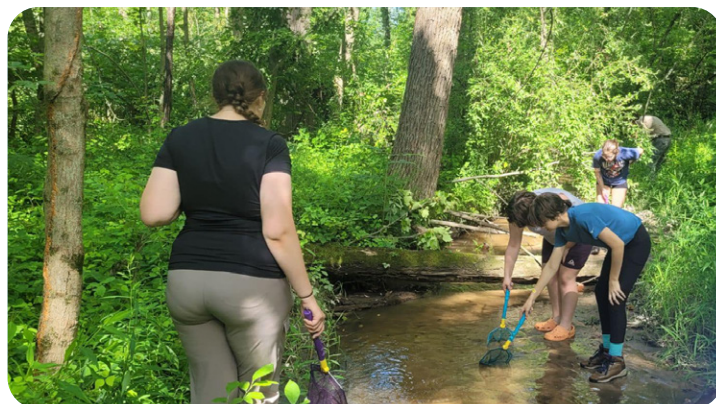
Become a nomadic traveler as we caravan and camp our way through GSCI's camps with a few fun stops along the way. Starting at Camp Tapawingo, spend the day in a harness swinging from the cables of the 20ft high ropes course. Then, spend the night camping at Camp Widjiwagan on your way to explore the Saint Louis Zoo! Take aim on the archery range of Camp Kiwanis and hike the trail along the Sangamon River. On your way back to Tapawingo stop by the Urban Adventure Park in Normal to jump and climb to new heights!

No application needed for Road Trippers. We recommend that campers have attended overnight camp twice prior to this session and will be required to pack, carry, and tend to their own gear. Mess kits/sturdy dishes are required. Backpacking packs are suggested.

Entering grades 7-12

Min/Max: 5/10

Girl Scout	T1: \$810	T2: \$660	T3: \$535
Non-Girl Scout	T1: \$835	T2: \$685	T3: \$560



Family and Troop Events

Camp Kiwanis

Winter in July

Saturday, July 26 - Sunday, July 27

You know what would make summer even more fun? If it was winter! Join us for festive family fun with a summer twist! Have a “snow ball fight”, get creative with a seasonal STEM challenge and crafts, make “campfire thanksgiving dinner”, and more! As the day winds down, we’ll pitch our tents under the stars and spend time caroling around the campfire. After a tasty breakfast, we’ll spend a bit more time making memories together before the NYE ball drops at 11am.

Lunch Saturday is a pack-your-own picnic, however dinner Saturday and breakfast Sunday are included.

All levels receive a fun patch. Not a Drop Off Event.

All Levels Welcome Min/Max: 10/40

Girl Scout	T1: \$60	T2: \$50	T3: \$40
------------	----------	----------	----------

Non-Girl Scout	T1: \$60	T2: \$50	T3: \$40
----------------	----------	----------	----------

Camp Widjiwagan

Swiftie Sleepover Spectacular

Saturday, June 14 - Sunday, June 15

Calling all Swifties!! Are you ready to “shake it off” and party like it’s 1989? Break out the sequins and glitter and don your favorite Tay-Tay attire. Prepare and decorate the songstress’ favorite red velvet cookies and roast hotdogs by the fire. Of course, making new friends includes adding some new friendship bracelets to your collection while snapping some photos in our Swiftie inspired photo booth. Maybe you could be a big winner in Swiftie bingo or trivia? If not, you can show us your moves while singing your heart out on the karaoke machine. The question is “Are you ready for it?”

Not a drop-off event. Adults must register and meet ratios. Fun patch, dinner, snack and breakfast included.

All Levels Welcome Min/Max: 10/40

Girl Scout	T1: \$60	T2: \$50	T3: \$40
------------	----------	----------	----------

Non-Girl Scout	T1: \$60	T2: \$50	T3: \$40
----------------	----------	----------	----------

Camp Tapawingo

A Slice of Tap

Saturday, June 21 - Sunday, June 22

If you are dreaming of coming to camp, but not sure you’re ready to be on your own, this weekend is for you! Come with your favorite adult or your troop and experience some of what camp has to offer! You’ll spend time on the lake, try out target sports, make a campy craft, sing songs around the campfire, and more, all with your favorite pals by your side.

Not a Drop Off Event. Adults must register and meet ratios. Lunch, dinner, and breakfast will be provided.

All Levels Welcome Min/Max: 20/70

Girl Scout	T1: \$60	T2: \$50	T3: \$40
------------	----------	----------	----------

Non-Girl Scout	T1: \$60	T2: \$50	T3: \$40
----------------	----------	----------	----------



Summer Programs

Girl Scout Day at the Capitol

May 2, 9am-3pm

BOS Center, Springfield

Explore democracy, see government in action, and advocate for policies that empower girls.

March to the Capitol for a rally at the Lincoln Statue.

Earn steps toward the Citizenship Badges at the Girl Expo and visit with community partners that provide fun and educational activities.

Girl Scouts will receive a fun patch. Optional event t-shirts are available for pre-order.

All Girl Scout Families Welcome!

\$18/Girl Scout • \$21/non-member • \$15/adult

Min/Max: 800/3000 youth • 100/500 adults

Register by March 20



Girl Scout Day at Jellystone Park

July 9, 11am-5pm

Yogi Bear's Jellystone Park, Pittsfield

Spend the day with other Scouts exploring and having fun! Try your hand at Kayaking or SUP boarding, or if you are looking for something more mellow, you can fish to your heart's content. If you are feeling adventurous, swim out to the largest Wibet obstacle course in Central Illinois! There is also an oversized swimming pool and splash pad to enjoy. You may even get to meet Yogi or one of his friends!

This is a fun family event - everyone is invited to register! Registered Girl Scouts will participate in a planned activity and receive a fun patch.

All Girl Scout Families Welcome!

\$25/Girl Scout • \$20/non-member • \$20/adult

Min/Max: 25/100 youth • 25/100 adults

Register by July 7

Girl Scout Day at the Fair

August 11, Noon-6pm

Illinois State Fairgrounds, Springfield

All Girl Scout Families Welcome!

Join us for Girl Scout Day at the Illinois State Fair! Girl Scouts wearing their uniform or a Girl Scout t-shirt will receive FREE admission into the fair. Girl Scouts, along with their family, can purchase ride armbands at \$5 off the normal cost at our Girl Scout tent located near the entrance of the Carnival Midway.

Custom fair fun patches must be ordered in advance and will be available for pickup at the Girl Scout tent. Girl Scout tent will be open Noon-6pm. Registration and cost info below is for patch only.

Register to receive a limited edition fun patch!

\$3/Girl Scout • \$6/non-member

Min/Max: 50/150 youth

Register by August 6



Camp Directory

KEY: **D** Daisy K-1 **B** Brownie 2-3 **J** Junior 4-5 **C** Cadette 6-8 **S** Senior 9-10 **A** Ambassador 11-12

Date	Camp Session	Location	Pg.	D	B	J	C	S	A
April 25	Try It Out!	Camp Tapawingo, Metamora	14						
April 26	Adventure Seekers	Camp Widjiwagan, Springfield	14						
May 10	Discover Day Camp	Camp Widjiwagan, Springfield	14						
May 2	Girl Scout Day at the Capitol	BOS Center, Springfield	40						
June 8-13	Dabblers	Camp Tapawingo, Metamora	27						
June 8-13	Eye of the Beholder	Camp Tapawingo, Metamora	27						
June 8-13	Last One Standing	Camp Tapawingo, Metamora	27						
June 8-13	Counselors in Training II (CIT II)	Camp Tapawingo, Metamora	30						
June 8-13	Paddle n' Saddle	Camp Tapawingo, Metamora	35						
June 8-13	Wild West	Camp Tapawingo, Metamora	35						
June 9-13	Camp Creativity	Camp Kiwanis, Mahomet	16						
June 9-13	Top Secret Spy Camp	Camp Sacajawea, Quincy	19						
June 9-13	Top Secret Spy Camp - CIT	Camp Sacajawea, Quincy	19						
June 9-13	Mad Scientists	Camp Widjiwagan, Springfield	21						
June 14-15	Swiftie Sleepover Spectacular	Camp Widjiwagan, Springfield	39						
June 15-20	Candles and Candy	Camp Tapawingo, Metamora	27						
June 15-20	Trekkers	Camp Tapawingo, Metamora	28						
June 15-20	Teen X-Treme	Camp Tapawingo, Metamora	28						
June 15-20	Counselors in Training I (CIT I)	Camp Tapawingo, Metamora	31						
June 15-20	Trail ARTventures	Camp Tapawingo, Metamora	35						
June 15-20	Horses n' Heights	Camp Tapawingo, Metamora	35						
June 16-20	Camp of Clues	Camp Kiwanis, Mahomet	16						
June 16-20	Art Adventure	Camp Widjiwagan, Springfield	21						
June 21-22	A Slice of Tap	Camp Tapawingo, Metamora	39						
June 22-27	Mermaids	Camp Tapawingo, Metamora	28						

Date	Camp Session	Location	Pg.	D	B	J	C	S	A
June 22-27	Night Owl	Camp Tapawingo, Metamora	28			●	●		
June 22-27	Dolphins	Camp Tapawingo, Metamora	28			●	●		
June 22-27	Counselors in Training I (CIT I)	Camp Tapawingo, Metamora	31					●	
June 22-27	Trail Mates	Camp Tapawingo, Metamora	36				●		
June 22-27	Sea Horses	Camp Tapawingo, Metamora	36			●			
June 23-27	Animal Adventures: Wildlife Week	Camp Kiwanis, Mahomet	16	●	●	●			
June 23-27	H2O	Camp Widjiwagan, Springfield	21	●	●	●			
June 29- July 1	Pair Up	Camp Tapawingo, Metamora	25	●	●	●			
June 29- July 1	Adventure Awaits	Camp Tapawingo, Metamora	25			●	●		
June 29- July 1	Crafty Campers	Camp Tapawingo, Metamora	25		●	●			
June 29- July 1	Midnight Mischief	Camp Tapawingo, Metamora	25				●	●	
June 29- July 1	Ponypalooza	Camp Tapawingo, Metamora	34			●	●		
June 29- July 1	Ribbons n' Reins	Camp Tapawingo, Metamora	34			●			
July 7-11	Adventure Cove	Camp Kiwanis, Mahomet	16	●	●	●			
July 7-11	Bits n' Pieces	Camp Tapawingo, Metamora	20	●	●	●	●		
July 7-11	Horse Tales	Camp Tapawingo, Metamora	20			●			
July 7-11	Icky Sticky Ooey Gooley	Camp Widjiwagan, Springfield	21	●	●	●			
July 7-11	Camp Eclipse - Solar	Camp Tapawingo, Metamora	26	●	●				
July 7-11	Camp Eclipse - Lunar	Camp Tapawingo, Metamora	26			●	●		
July 9	Girl Scout Day at Jellystone Park	Yogi Bear's Jellystone Park, Pittsfield	40	●	●	●	●	●	●
July 13-18	Outdoor Explorers	Camp Tapawingo, Metamora	28		●				
July 13-18	Ultimate Challenge	Camp Tapawingo, Metamora	29			●	●		
July 13-18	Messy Madness	Camp Tapawingo, Metamora	29			●	●		
July 13-18	Moonlight Magic	Camp Tapawingo, Metamora	29				●		
July 13-18	Level 4: Filly	Camp Tapawingo, Metamora	36				●		
July 13-18	Trail Masters	Camp Tapawingo, Metamora	36				●	●	●
July 13-18	Road Trippers	Camp Tapawingo, Metamora	38				●	●	●
July 14-18	Enchanted Forest: Fairytale Adventure	Camp Kiwanis, Mahomet	17	●	●	●			
July 14-18	Splash Zone	Camp Widjiwagan, Springfield	22	●	●	●			
July 20-25	Princess Pals	Camp Tapawingo, Metamora	30			●	●		

KEY: **D** Daisy K-1 **B** Brownie 2-3 **J** Junior 4-5 **C** Cadette 6-8 **S** Senior 9-10 **A** Ambassador 11-12

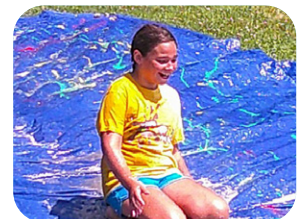
Date	Camp Session	Location	Pg.	D	B	J	C	S	A
July 20-25	Wizarding 101	Camp Tapawingo, Metamora	30			●	●		
July 20-25	Extreme Cuisine	Camp Tapawingo, Metamora	30				●	●	●
July 20-25	Leader in Training (LIT)	Camp Tapawingo, Metamora	31				●		
July 20-25	Tack n' Trail	Camp Tapawingo, Metamora	37			●	●		
July 20-25	Boots n' Bows	Camp Tapawingo, Metamora	37			●	●		
July 21-25	Always Be Prepared	Camp Kiwanis, Mahomet	17	●	●	●			
July 21-25	Animal Antics	Camp Widjiwagan, Springfield	22	●	●	●			
July 21-25	Camp Fury	Camp Kiwanis, Mahomet	32					●	●
July 26-27	Winter in July	Camp Kiwanis, Mahomet	39	●	●	●	●	●	●
July 28- August 1	Let the Water Games Begin Again!	Camp Kiwanis, Mahomet	17	●	●	●			
July 28- August 1	Camp Chefs	Camp Widjiwagan, Springfield	22	●	●	●			
August 11	Girl Scout Day at the Fair	Illinois State Fairgrounds, Springfield	40	●	●	●	●	●	●



Adventure. Fun. Friends.



Your best summer yet!



Make lasting memories at Girl Scout Camp.



We can't wait to see you this year at camp!

